



Café Royal Hotel  
*Established 1865*



Combining architectural heritage with contemporary design, Café Royal has been reincarnated as a luxury hotel in the heart of London's West End, with the elegance of Mayfair to the west and the creativity of Soho to the east.







Welcome to a place  
where international travellers become  
instant insiders.

Where the past is respected and  
the present is relished.

Where glamour and grandeur is coupled  
with contemporary style.

Where everything is nearby and  
nothing is impossible.

Welcome to your home in the heart  
of London.

Welcome to Café Royal hotel, the here  
and now since 1865.





Historic Regent Street entrance.



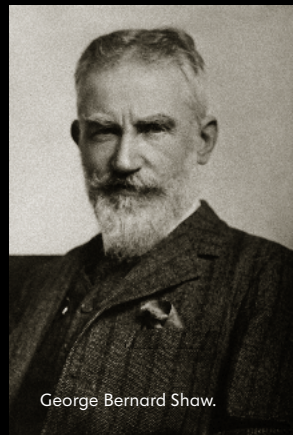
Lou Reed, Mick Jagger, Ziggy Stardust (David Bowie) and Lulu at Café Royal, 1973.



Winston Churchill.



George Bernard Shaw.



Virginia Woolf.



Oscar Wilde.



Throughout its history, Café Royal has been the epicentre of fashionable London. Welcoming famed patrons, from royalty and celebrity, to the creative and the notorious, Café Royal was an established and iconic landmark on London's social scene, for over a century.

Elizabeth Taylor.



Alana Stewart and Andy Warhol, Café Royal, 1986.



Edward VIII and Wallis Simpson with their Pug Terrier, Disraeli.







Contemporary and serene guest floors blend seamlessly with the sensitive restoration.





# SUITES & GUESTROOMS





Weaving historical detail with contemporary design, the Empire Suite is the largest suite at Café Royal hotel. 212sqm/2,282sqft.





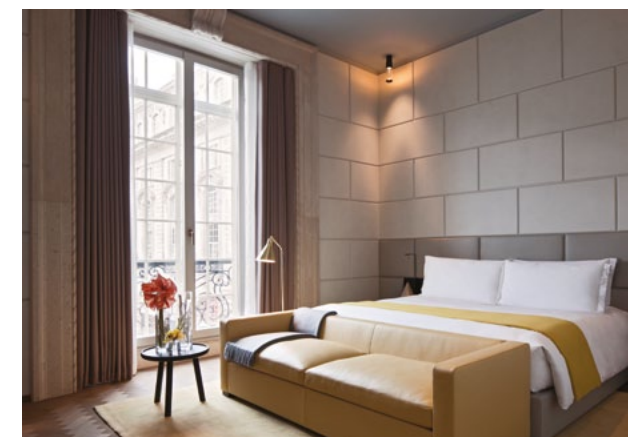
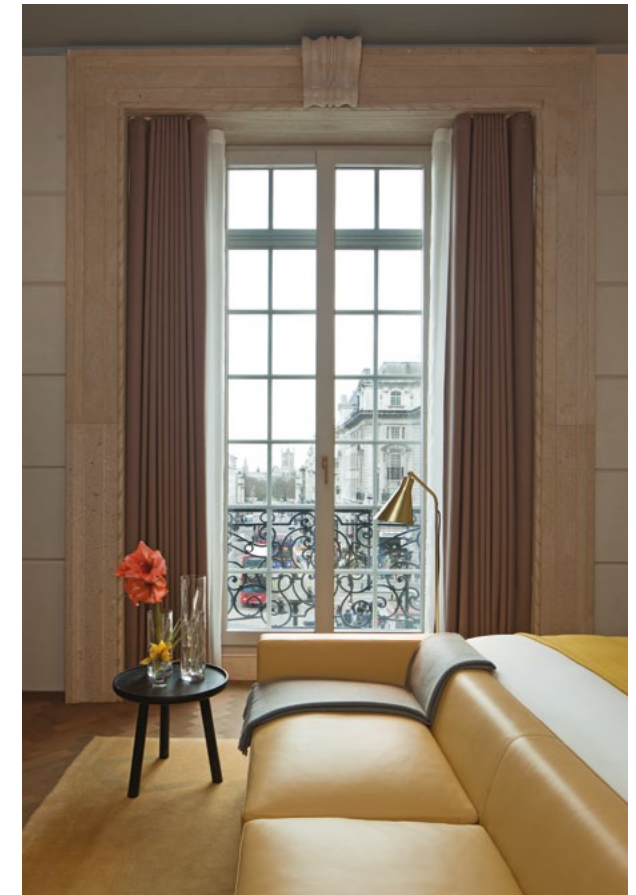
Reminiscent of Café Royal's glorious past, six signature suites have been created with unique aesthetic and character derived from original features.







Created in Rusticated Portland Stone to mirror the elegant Regent Street façade, or panelled in fumed English Oak, both style of guestrooms give an incredible sense of place.







Bathrooms are created exclusively in Carrara marble and include rainfall showers, many also feature separate deep soak baths.



An original Tudor fireplace is the grand centrepiece in a beautiful living room that celebrates the Elizabethan era. The Tudor Suite is 106sqm/1,141sqft.





The Mansard Junior Suite panelled with fumed English Oak. 52sqm/560sqft.





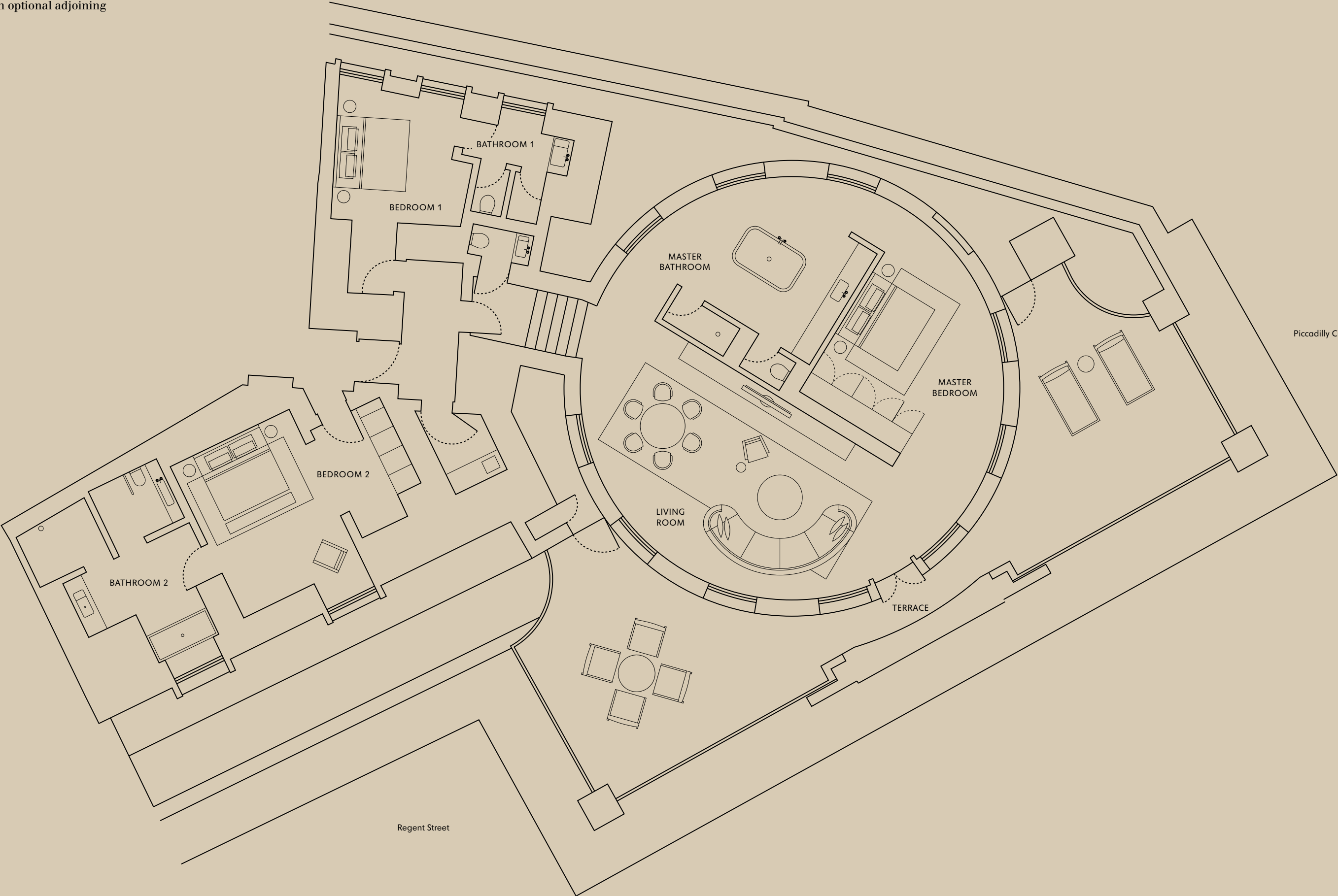


Created under a copper domed rotunda, an original feature of this Grade II listed building, the Dome Suite has been modernised to become the ultimate rock 'n' roll suite with a cinema style 103 inch projector, DJ 'booth', oversized mirror ball with spectacular LED lighting illuminating the dome and a giant ming-green bath tub. 121sqm/1,300sqft with 85sqm/915sqft terrace.





Dome Suite floorplan with optional adjoining  
guestrooms.





The Dome Suite offers two spacious terraces with unrivaled ‘Mary Poppins’ views of London from the same vantage point of the large statue of Britannia, an iconic symbol of Britain’s influence.







RESTAURANTS,  
BARS & EVENTS



The Oscar Wilde Bar, formerly the iconic Grill Room, has been exquisitely restored to its original Louis XVI splendour. The jewel of Café Royal hotel was the preferred haunt of the bold and the beautiful and is now the place to enjoy Champagne, cocktails and a light menu, complemented by a signature cabaret on select evenings.





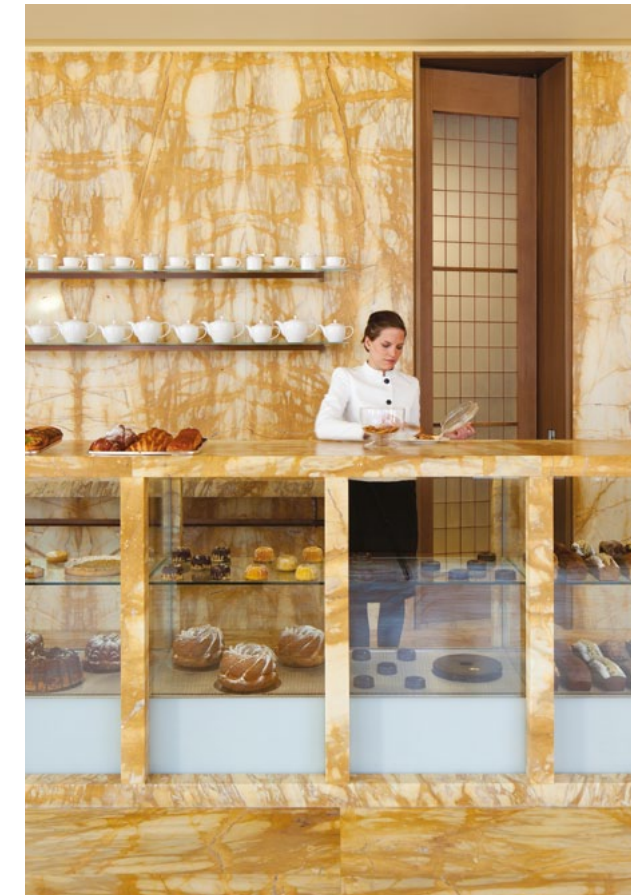
The Domino will be the new, refined dining experience completing Café Royal hotel's return to London's vibrant social scene.







Fronting Regent Street, The Café celebrates the European tradition of café culture. It offers a light menu of seasonal dishes alongside an espresso bar and counters lined with cakes, pastries and chocolates; these are created fresh everyday by Café Royal hotel's in-house executive pastry chef.





Inspired by the Café Royal Cocktail Book compiled in 1937, the Green Bar at Café Royal hotel is a vibrant cocktail destination both for contemporary Londoners and hotel guests.





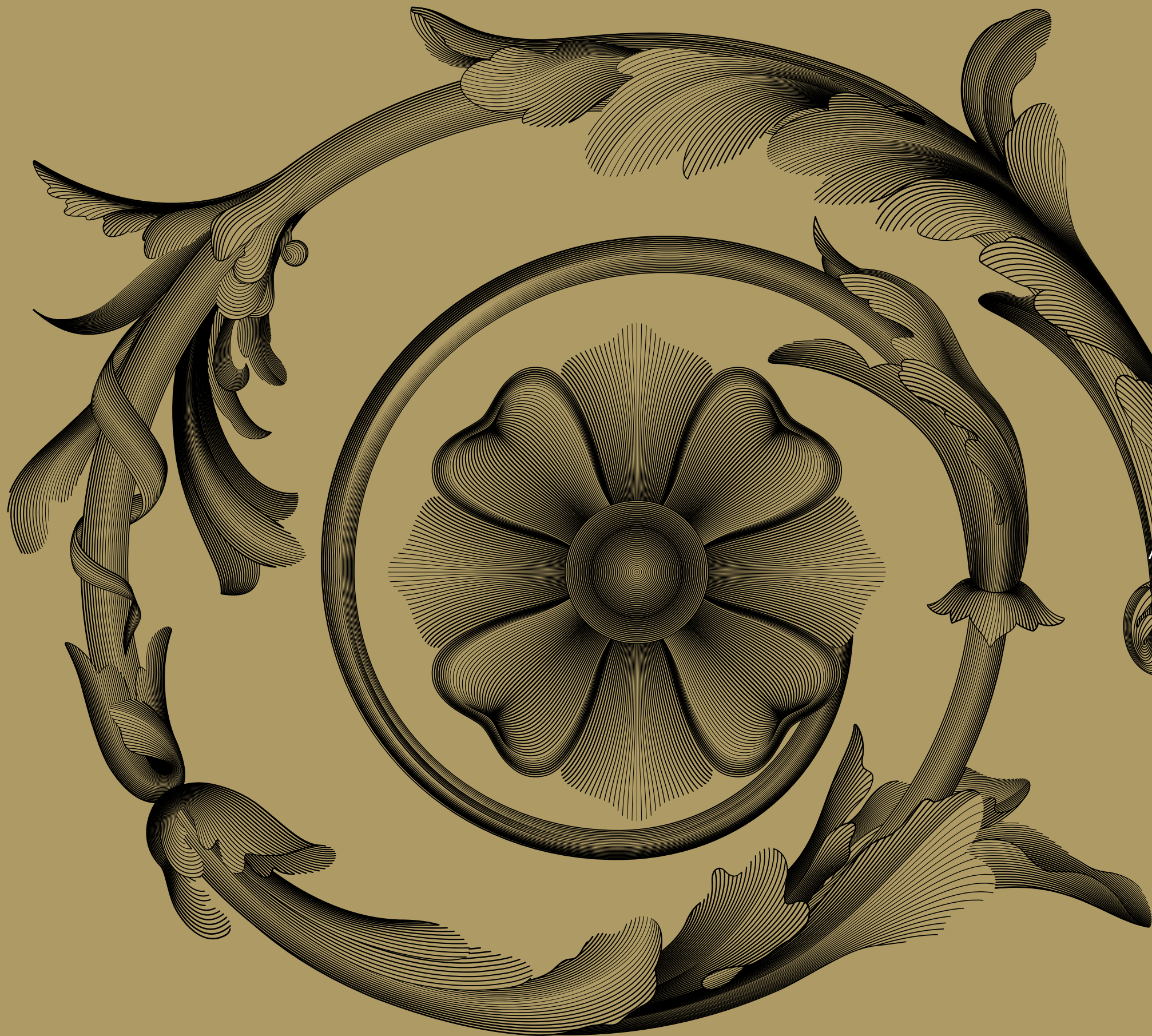


Café Royal, originally the preferred haunt of intellectuals and creatives through the ages, continues its celebrated legacy as the place for great minds to discuss great ideas.

The hotel is perfectly positioned in the heart of central London for meetings and private events ranging from a discreet business dinner, to a lavish wedding, or an exclusive residential conference.







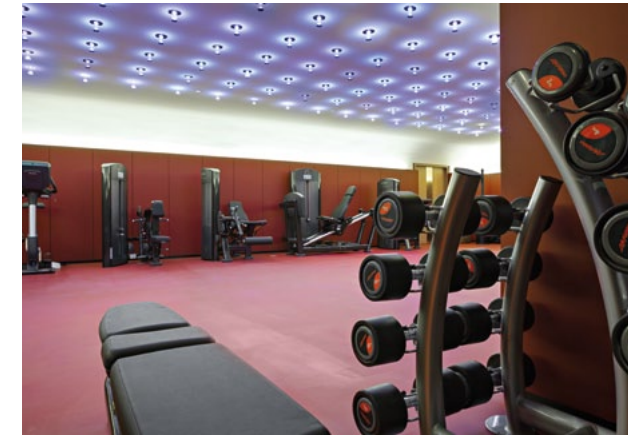
AKASHA



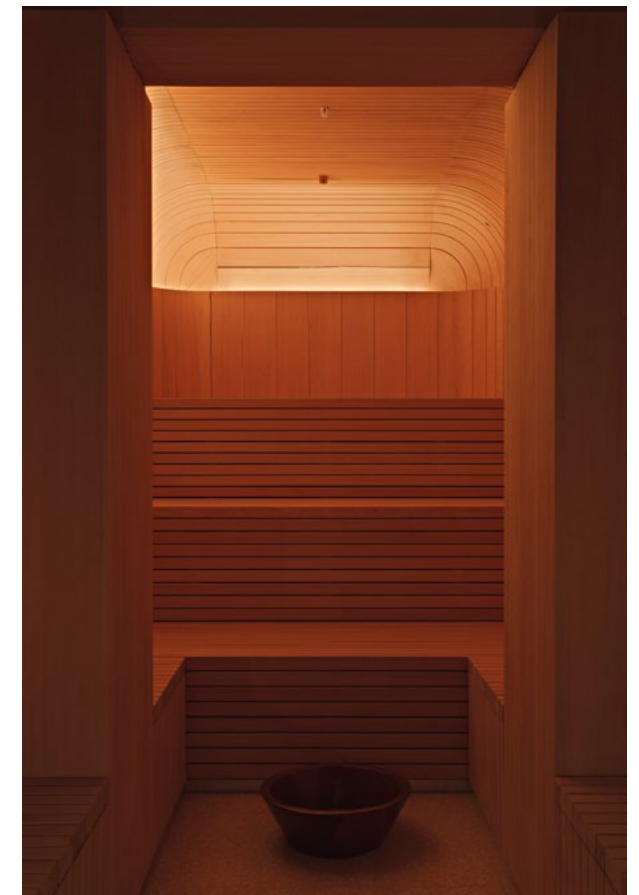


The Akasha Holistic Wellbeing Centre is an urban retreat spanning over 1,200sqm/13,000sqft. Reflecting a core vision to harmoniously unite the four natural elements of nature, Akasha features four corresponding spaces; earth offers nourishment in the lounge bar, water flows through the spa, fire blazes across the gym and air breezes through the studios.





In addition to a large lap pool, sauna, steam room and Jacuzzi, Akasha offers nine treatment rooms including a private Hammam, Vichy shower and Watsu pool. A state-of-the-art gym features cutting edge technology including LifeFitness equipment and dedicated personal trainers.







Double Treatment Akasha Suite.





THE  
WEST END





Café Royal hotel is ideally located on Regent Street, in the beating heart of the West End. To the west are the glamorous private members clubs, elegant boutiques and fine dining restaurants of Mayfair. To the east Soho's lattice of alleys and streets define London's nightlife with late night coffee shops and elusive cocktail bars, while London's world famous theatreland is just around the corner.









# Summary of facilities

GUESTROOMS & SUITES
<b>Guestrooms</b>
Portland Guestrooms (35sqm/376sqf)
Portland Deluxe Guestrooms (40sqm/430sqf)
Mansard Guestrooms (35sqm/344sqf)
Mansard Deluxe Guestrooms (40sqm/430sqf)
<b>Suites</b>
Junior Suites (52sqm/560sqf)
Westminster Suites (61sqm/657sqf)
Glasshouse Suites (66sqm/710sqf)
Regent Suites (90sqm/969sqf)
Oscar Suite (108sqm/1,063sqf)
<b>Signature Suites</b>
Marquis (81sqm/872sqf)
Club (105sqm/1,130sqf)
Tudor (106sqm/1,141sqf)
Celestine (178sqm/1,916sqf)
Empire (212sqm/2,282sqf)
Dome (206sqm/2,217sqf)
GUESTROOM AMENITIES/FACILITIES
Personal Butler service on request
Butler's Pantry with complimentary Nespresso coffee machine
24hr In-Room Dining
Frette Linen
Designer British bathroom amenities from Floris
Bathroom mirror TV screen
Bang & Olufsen entertainment system
Superior stereo sound for wireless music connectivity
Media hub
High-speed complimentary Wi-Fi
Air conditioning

RESTAURANTS & BARS
Ten Room
Green Bar
Oscar Wilde Bar
Domino
The Café
In-Room Dining

MEETINGS & EVENTS CENTRE
Two banqueting suites and four meeting, conference and social function rooms.
Nash (26sqm/280sqft)
Nicols (32sqm/345sqft)
Mayfair (58sqm/625sqft)
Soho (59sqm/635sqft)
Queensberry (141sqm/1,518sqft)
Pompadour (176sqm/1,895sqft)

AKASHA HOLISTIC WELLBEING CENTRE (1,200sqm/13,000sqf)
Lap pool (18m/60ft long)
Gym
Spa
Sauna, steam room and Jacuzzi
Watsu, Vichy and Hammam signature experiences
Yoga, Tai Chi and Pilates Studio
Meditation Room
Lounge Bar

ACCESS
Café Royal is located in central London, easily accessible from major airports and rail/underground stations

<b>Air</b>
Café Royal hotel has its own airport transfer service
LONDON HEATHROW:
Car: 50min
Heathrow Express: 15min to/from Paddington Station
Underground Piccadilly line: 1h 15min
LONDON GATWICK:
Car: 1h 30min
Gatwick Express: 30min to/from Victoria Station

<b>Rail</b>
<b>London Underground</b>
Café Royal hotel is less than a minute's walk from Piccadilly Circus station served by the Bakerloo and Piccadilly lines
<b>National Rail</b>
Paddington Station to London Heathrow: 15min from Café Royal hotel by car or Underground for services
Victoria Station to London Gatwick: 15min by car or Underground
Euston Station: 20min from Café Royal hotel by car or Underground
King's Cross Station: 20min from Café Royal hotel by car or Underground
Waterloo: 20min from Café Royal hotel by car or Underground
<b>International Rail</b>
St Pancras Station: 20min from Café Royal hotel by car or Underground, for Eurostar services to the Continent



View from the Dome Suite.



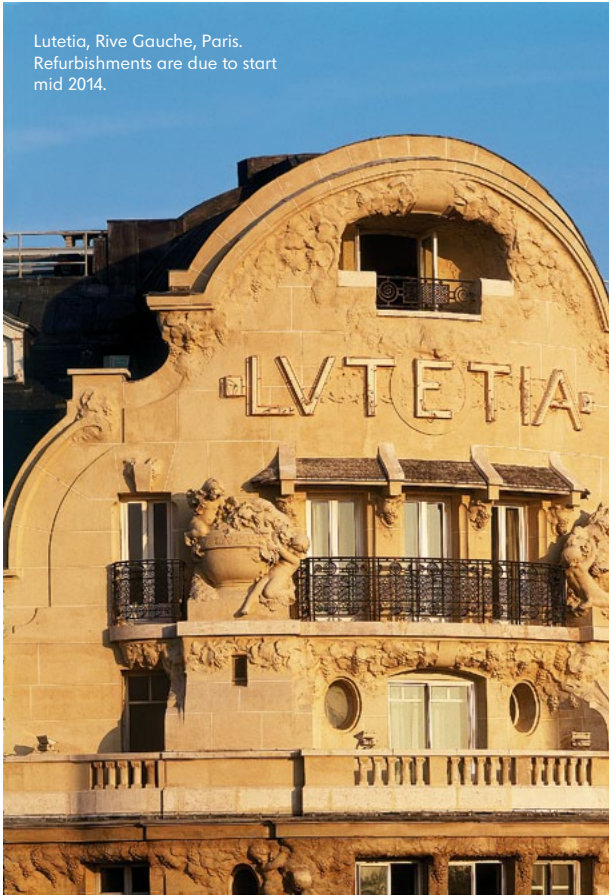


### The Set Hotels

*At home in the heart of the city*

The Set is a collection of individual hotels created to redefine the concept of the luxury hotel for sophisticated, design literate travellers of the 21<sup>st</sup> century. Working to an uncompromising brief that called for hotels that were not only of the moment but that would define their times and locations, architects and designers of the calibre of Piero Lissoni, Sir David Chipperfield and Jean-Michel Wilmotte have been recruited to marry the old with the new and create beautiful grand hotels.

*thesethotels.com*



**CAFÉ ROYAL HOTEL**  
68 REGENT STREET, LONDON, W1B 4DY  
UNITED KINGDOM

USA TOLL FREE 1 855 919 3580

TELEPHONE +44 (0)20 7406 3333  
FAX +44 (0)20 7406 3366

RESERVATIONS +44 (0)20 7406 3322  
RESERVATIONS@HOTELCAFEROYAL.COM

EVENTS +44 (0)20 7406 3300

HOTELCAFEROYAL.COM



T	H	E
S	E	T

**CAFÉ ROYAL**  
REGENT STREET, LONDON

**CONSERVATORIUM**  
MUSEUMPLEIN, AMSTERDAM

**LUTETIA**  
RIVE GAUCHE, PARIS  
(COMING SOON)